

# Sinocare

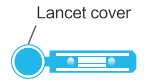
## Safe-Accu 2 Quick Guide

## Prepare Materials

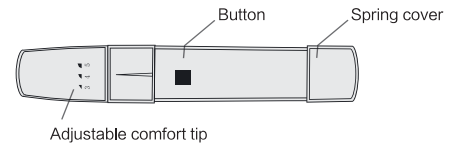
Safe-Accu 2 Meter



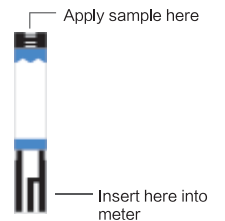
Lancet



Lancing device



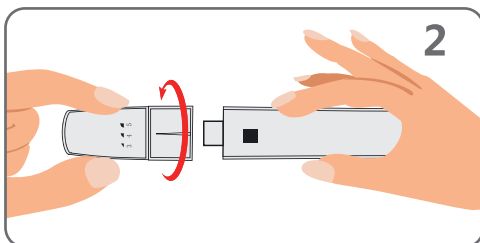
Strip vial



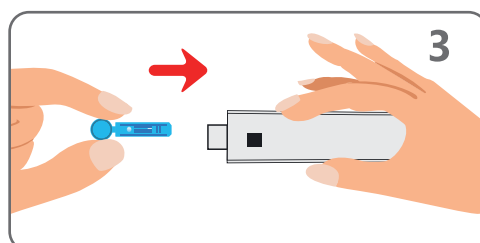
⚠ Before test, please read quick guide and user manual carefully.



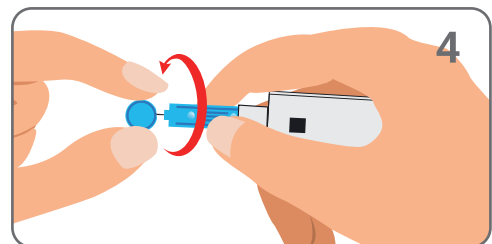
STEP 1: Wash your hands with soap or use an alcohol swab to clean the fingertip.



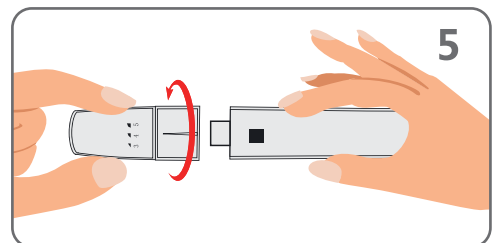
STEP 2: Unscrew the Sinocare lancing device cover.



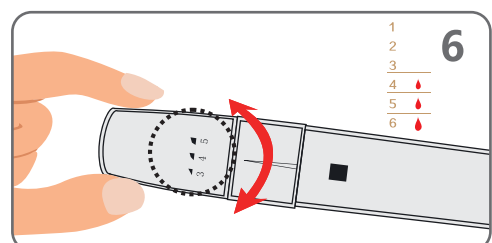
STEP 3: Insert a Sinocare lancet into the Sinocare lancing device until it comes to a full stop.



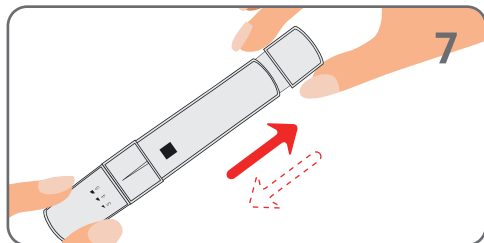
STEP 4: Twist and pull to remove the lancet protector. Retain the lancet protector for safe lancet disposal.



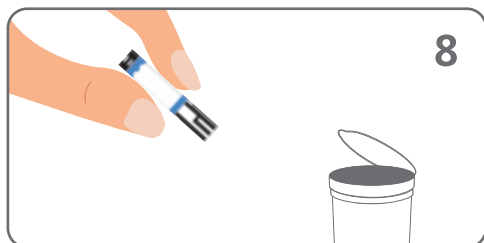
STEP 5: Screw the lancing device cover back on.



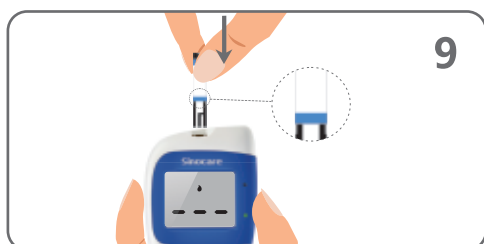
STEP 6: Twist the adjustable comfort tip to adjust the puncture depth.



STEP 7: Pull the spring cover back to arm the Sinocare lancing device.



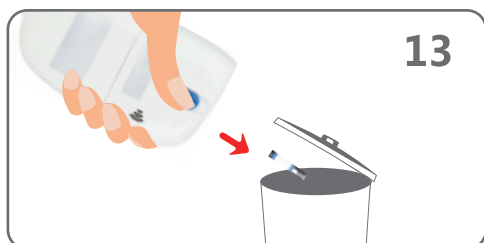
STEP 8: Take a strip out of the strip vial. Immediately close the vial lid.



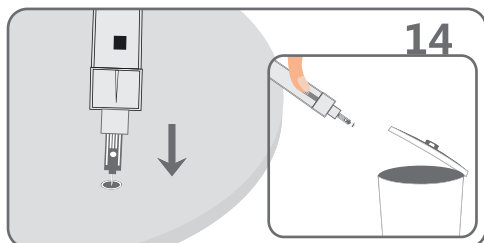
STEP 9: Fully insert the test strip into the meter Test Strip Port until it stops.



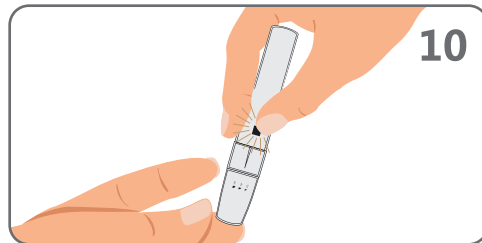
STEP 12: After a 9-second count down, the meter displays the test result.



STEP 13: Eject the strip. Discard the used Safe-Accu blood glucose test strip carefully to avoid contamination.

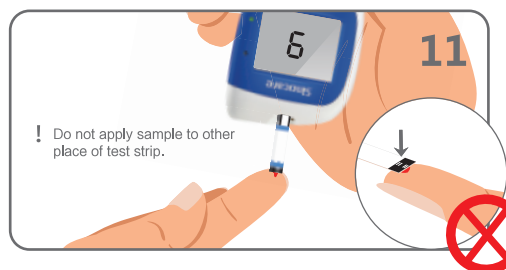


STEP 14: Remove the Sinocare lancing device cover. With the lancet protector on the table, stick the needle of the lancet into the protector. Eject the lancet and screw the lancet cover back on.



STEP 10: Make sure the Sinocare lancing device is pressed firmly to your finger. Press the button to lance.

Attention: If you did not produce a large enough blood sample, gently massage your finger. **DO NOT SQUEEZE YOUR FINGER.** Refer to step 6 to adjust the puncture depth and lance again.



STEP 11: When the Safe-Accu 2 blood glucose meter screen displays a flashing blood drop symbol, apply the blood sample to the tip of the Reaction Zone. You can apply the blood sample to either the left, middle, or right tip of the Reaction Zone.

**Attention**

- 1. Lancets and strip are for single use only. Do not reuse.
- 2. Do not share your lancing device with others.
- 3. Do not use expired strip.

**Changsha Sinocare Inc.**  
 No. 265, Guyuan Road, Hi-Tech Zone, Changsha,  
 Hunan Province, 410205, People's Republic of China  
 TEL: +86-731-89935581/89935582  
 Email: info@sinocare.com  
 Website: www.sinocare.com

**Shanghai International Holding Corp. GmbH (Europe)**  
 Eiffestraße 80, 20537 Hamburg, Germany.  
 Tel: +49-40-2513175 Fax: +49-40-255726  
 E-mail: shholding@hotmail.com

Version No.: 181107-1

